

HOW TO DO GROUND VERIFICATION OF THE EXISTING LAND USE PLAN FOR GREATER MUMBAI

STEP 1: Determine Which Ward you live in.

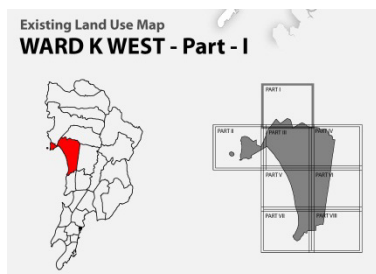
STEP 2: Download your Ward plan from the MCGM website:

<http://portal.mcg.gov.in/irj/portal/anonymous/qLELUSurveyData>

Or

<http://www.udri.org/images/elu/>

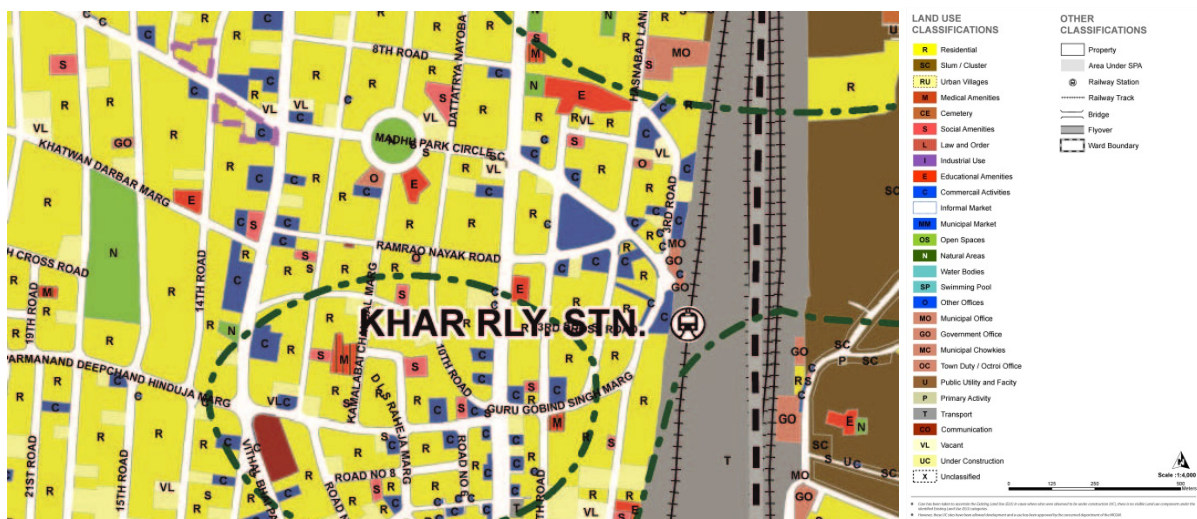
On the MCGM website, the plans for each ward are in numerous sections. You will need to print out all of the sheets and lay them out to make the whole ward.



STEP 3: Find your site on the ELU map

All of these maps are printed with north facing upwards just as in any road map or world map.

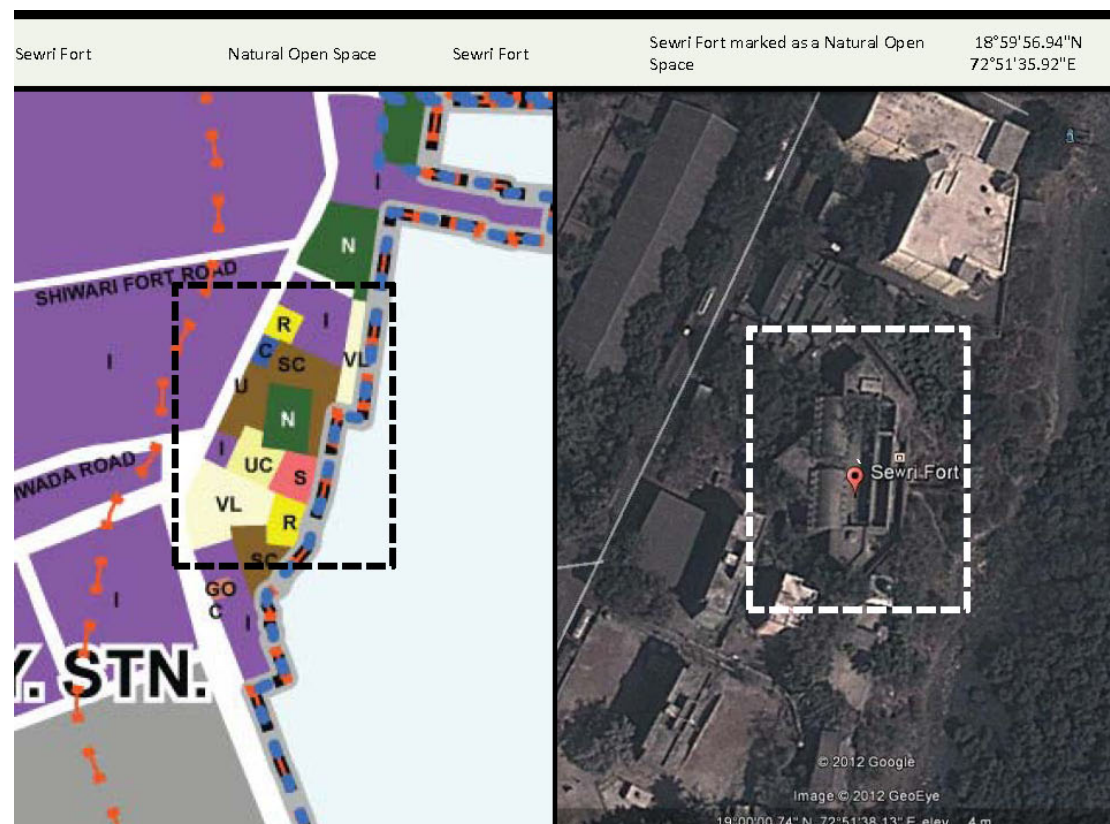
Identify a well-known landmark on the map (like a large junction of roads, a large open space, railway station etc.) Once you have located yourself on the plan, look at the street names to get an idea of the neighbourhood. Use this to find the road on which your site is located. If you know the approximate position of the land parcel you are verifying within the block (i.e. mid-block, south end of block etc.) You can then determine what colour it has been marked and the letter code assigned to it. The legend on each of the maps will help you de-code what the colours and letters mean .



STEP 4: Compare the ELU Plan with the Actual Site

If the land parcel you are verifying matches the designation on the ELU map then that is fine. However if there are any of the following discrepancies as below, make a note of it:

- 1) The land parcel is shown as a different land use from what it is actually used for. (i.e Open Space shown as vacant land, mangroves shown as slums etc)
- 2) The land uses existing on the site are not reflected in the ELU plan (i.e. part of an open space is a gymkhana but this has not been shown on the ELU which instead marks the whole site as open space)
- 3) The heritage status and grading of a building has not been marked.
- 4) Overhead Infrastructure such as transport, or high tension lines, etc. have not been marked



STEP 5: Record your findings

Once you have found a discrepancy in the ELU plan vis-à-vis the situation on the ground, you must communicate this to the MCGM office. You can do this in the following format:

Col 1	Column 2	Column 3	Column 4	Column 5	Column 6
No.	Location	Ground verified Activity	New ELU	Notes	Coordinates
WARD					
	(example: area name, site / building name, road address)	(example: commercial / residential etc)	(example: commercial / residential etc)		(example: 18°56'39.22"N 72°50'1.89"E)

In the first column indicate the Ward location and provide a serial number to your site.

In the second column provide a general description of the location of the site by mentioning the area, road name on which it is located.

In the third column indicate what the site is actually used for (ground verified activity)

In the fourth indicate what the ELU map has shown as the usage of this site (i.e. the ground verified activity might be parking of cars while the ELU plan shows it as an open space)

In the fifth column you may include some notes as to why you think this discrepancy is important and needs to be rectified.

In the sixth column, provide the geographical coordinates of the site.

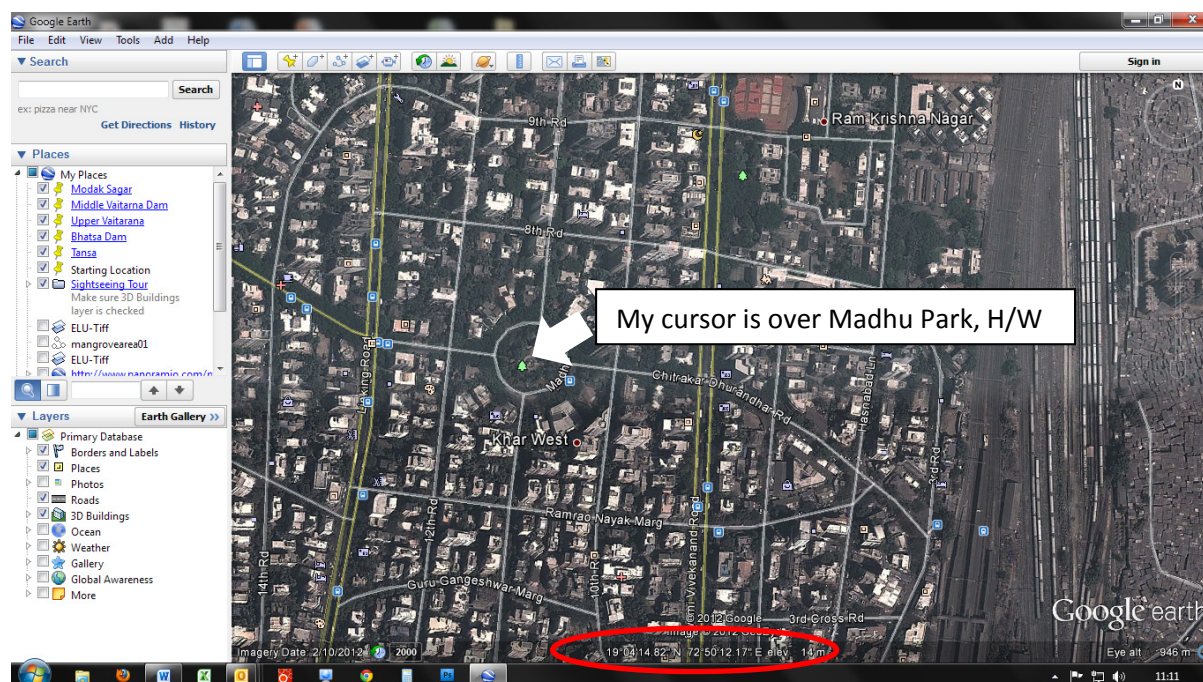
To find your Site Geo Code you will have to download, install and use a software called Google Earth.

STEP 6: Find Geo Coordinates for the site

In your web browser enter the web site <http://www.google.com/earth/index.html>

You will have to download and install Google earth on your computer by clicking on the 'Download Google Earth' button on the web page. Follow the download instructions and install.

Once you have Google earth up and running, rotate and zoom to India, Mumbai, your ward and find your site. Place the cursor over your site. The bottom of the screen will tell you the exact coordinates of your site (in degree, minutes and seconds). Copy down these coordinates accurately into the table above in column 6.



STEP 7: Communicate your findings with the MCGM and UDRI

Once you have identified all of the discrepancies in your area of interest, send an email with the table attached to the Chief Engineer, Development Plan, Municipal Corporation of Greater Mumbai at the email address : che.dp@mcgm.gov.in. Copy this email to the UDRI email address: developmentplan@udri.org. so that we can also follow up with relevant action on your comments and feedback.

Conversely if you are unable to provide an accurate Geo Code, You can mark out the site serial number (in column 1 of table) on a copy of the ELU plan and mail it with covering letter and table to the MCGM office

**Chief Engineer
Development Plan
Municipal Corporation of Greater Mumbai
5th floor Annexe Building
Mahapalika Marg
Mumbai 400001**

We would be grateful if you can also send UDRI a copy us the same map, table and letter to

DP24Seven Project
Urban Design Research Institute
43, Dr. V B Gandhi Marg
Kalaghoda, Fort
Mumbai 400 023